

S.N.C.K.C.

Established May,
2003

Vol.1, Issue II

Published - JUNE
15th, 2023



THE WET EXIT

A Monthly Newsletter for The Sierra Nevada Canoe and Kayak Club

IN THIS ISSUE

- p. 1-4 20th Anniversary Picnic Photos
- P. 8 TRIP PHOTOS - Collins Lake
- P. 11 The Newsletter's new name

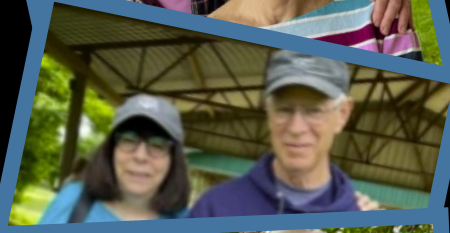
DEPARTMENTS

- P. 7 Monthly Passages
- P. 4-5 SNCKC 2023 Trip List
- P. 7 Quote of the Month
- P. 7 Event Schedule/Notices
- P. 9 Classifieds & Announcements
- P. 10 Website News
- P. 12 Where's the Kayak?





S.N.C.K.C
20th
Anniversary
Picnic

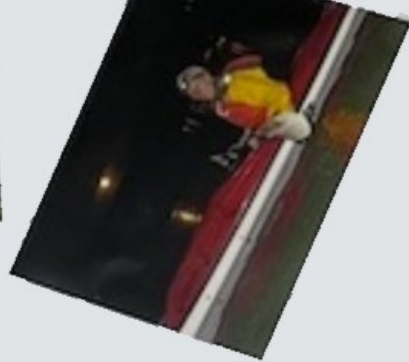
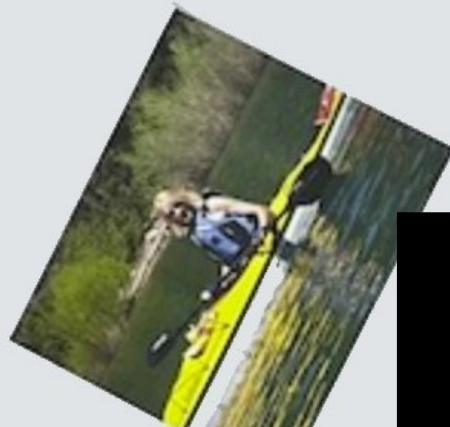
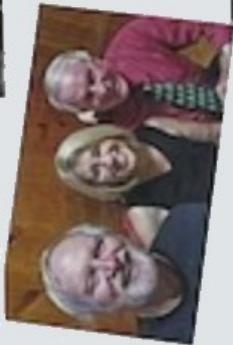
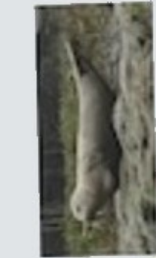


Posterboard Photos from the 20th Anniversary Picnic












Posterboard Photos from the 20th Anniversary Picnic

Page 2



Page 4

DAY PADDLING TRIPS

DATES & LOCATION	LEADER & CONTACT INFO	DRIVING INSTRUCTIONS (Click the Icon)	VENUE MAP (Click the Icon)
JUL 6 - Thursday Lake Spaulding	Chuck Kastenholz chuckk@c21.com (530)401-1502		
"For those interested in this mid week paddle, we will travel about 40 minutes from Grass Valley up Hwy 20 to Lake Spaulding. We are currently planning for about a 10:30 launch, bring a snack for your lunch and we should be done paddling by 2pm or so. Lake Spaulding is a beautiful mountain lake and hopefully we will not have a lot of competition mid week (Flag Day). Another post to all members will go out about 2 weeks before the paddle." - Chuck			
JUL 25 - Wednesday Lake Clementine	TBD - for Info Call Rachel Finson (530)263-0706		
AUG - TBD Donner Lake	Laurie Appling lbappling@yahoo.com (510)292-5917		
AUG 22 - Tuesday Annual Rescue Clinic at Rollins Lake Led by Thomas Schuebel, an international certified sea kayak instructor	Chris Crain cgcrair@gmail.com (530)263-0942		
AUG 29 - Tuesday Lake Valley Reservoir - Full Moon Paddle 6:00pm launch/8:30pm island snack/9:30pm Take-out	Keith Schoendoerfer keith@zwrvr.net (530)205-6305		
SEP 9 - Friday Webber Lake	Wendy Thiebeault wendytbo2@gmail.com (530)320-0165		
SEP 16 - Saturday Feather River	TBD - For Info Call Rachel Finson (530)263-0706		
OCT 14 - Saturday Loon Lake	Chris Crain cgcrair@gmail.com (530)263-0942		
OCT 31 - Tuesday TBD - Halloween Paddle <i>Can you dress up your yak to look like Nessy?</i>	Keith Schoendoerfer keith@zwrvr.net (530)205-6305		
NOV 18 - Saturday Lake Natoma - Potluck	Rachel or Chuck Rachel Finson (530)263-0706	- (530)263-0706	



Camping/Overnight Paddle Trips

DATES & LOCATION

LEADER & CONTACT INFO

DRIVING DIRECTIONS (Click the Icon)

VENUE MAP (Click the Icon)

CG WEBSITE

JUL 18-21 - Tuesday to Friday

Lake Tahoe
(William Kent CG)

Chuck Kastenholz

chuckk@c21.com
(530)401-1502



[William Kent CG](#)

"We are set for three nights of camping at William Kent Campground on the west shore of Tahoe for the nights of July 18, 19 and 20. We hope to do at least two paddles, maybe add another the last day we check out on the 20th. There are 12 currently signed up for camping and I know several others are interested in coming up for perhaps a day paddle. Also, please contact me if you are interested in joining us on one of the day paddles. Right now I'm considering a day paddle on the 19th from Camp Richardson into Emerald Bay and back to Camp Richardson. And then the next day on the 20th, possibly Tahoe Vista to Incline Village and just do a one way trip with some carpooling back to get cars". - Chuck

AUG 25-28 - Friday to Monday

Jackson Meadows Reservoir
Lower Silvertip Group Campsite

Rachel Finson

rasatsuki@gmail.com
(530)263-0706

"Please note this is a change in location and dates. I have booked the Silver Tip group site at Jackson Meadows Reservoir for 3 nights. Aug. 25-28. The Woodcamp Campground, which is individual sites, has flush toilets and is fairly close. Please let me know if you have an interest in joining this trip so I have a sense of numbers as we proceed. By the middle of July I will need firm commitments". - Rachel

SEP 21-26 - Saturday To Wednesday

Elkhorn Slough/Monterey
(Sunset Beach CG)

Wendy Thibeault

wendytbo2@gmail.com
(530)320-0165

www.reservecalifornia.com

OCTOBER - TBD

TBD (See Rachel Finson for info)

(530)262-0706

rasatsuki@gmail.com

Hey

We Need Trip Leaders.

If you can lead a trip of your choice, contact **Rachel Finson** at rasatsuki@gmail.com.

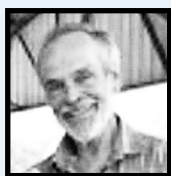
Let the Leader Know!

Just a reminder that it is mandatory all members let the trip leader know if they intend to go on a trip or cancel their plans to go on a trip. This is especially important for camping trips. For organizational, enjoyment, safety, and sometimes financial reasons, it is the leader's responsibility to know who is going, what site they have reserved (if camping), when they plan to arrive and leave, and to be informed in case they need to cancel. We all appreciate the time and effort our trip leaders expend to arrange successful, enjoyable, and safe trips. **Please do your part** so we can continue to recruit leaders and have fun trips.

Thank you, Your SNCKC Board

Observations & Musings

By Chris
Crain



In next month's issue

of The Wet Exit.

Chris will start his

occasional, if not

monthly column on

anything SNCKC



Club Meetings & Events

Monthly club meetings are typically held at 6:00 pm the fourth Thursday at *Seaman's Lodge in Pioneer Park, 427 Nimrod Street, Nevada City.*

Upcoming Meetings

Thursday, June 22: **Colorado River, Grand Canyon videos.** Deb Savoy will present. 6:00 Socializing 6:30 Potluck Dinner

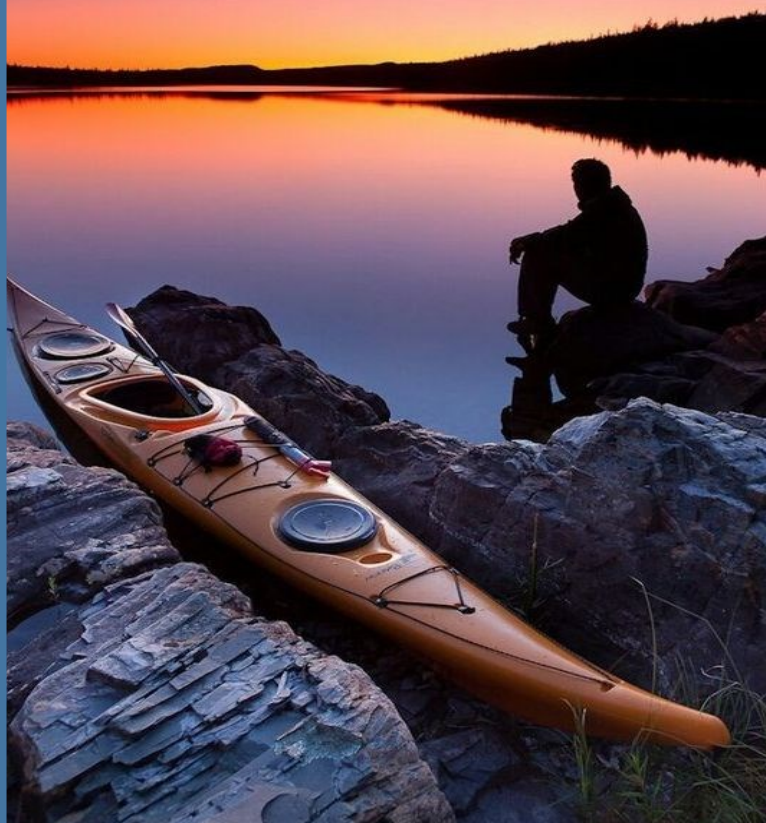
Thursday, July 27: **TBD**

Tuesday, August 22: **Annual Rescue Clinic**
with Thomas Schuebel

Thomas is a certified Kayak Instructor and honorary SNCKC member, who will instruct us in **assisted and self-rescue techniques**. All members are encouraged to attend the clinic for this important annual refresher of rescue skills. Visit Rescue Clinic under the Resources tab on the website.

Sometimes you find yourself in the middle
of nowhere, and sometimes in the middle
of nowhere, you find yourself.

-Unknown

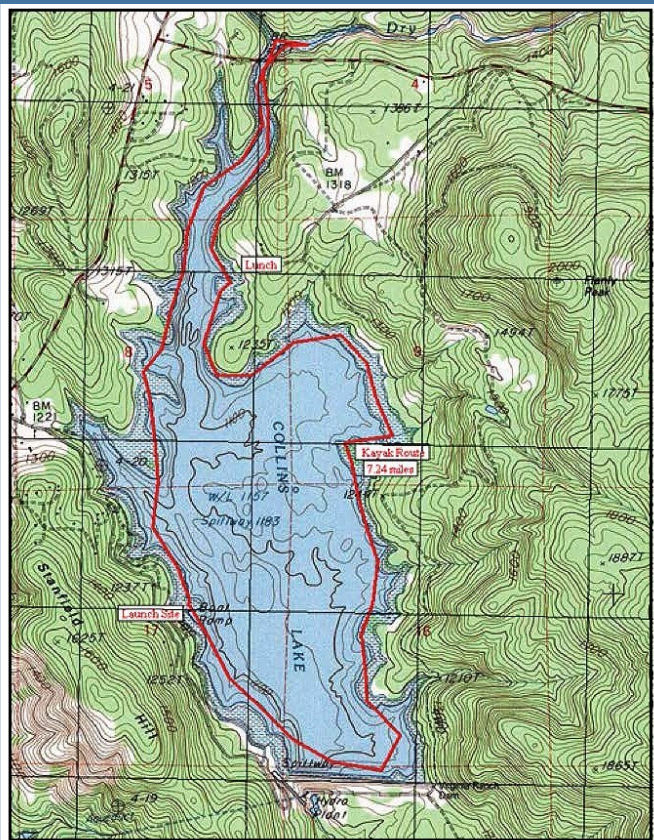


Quote of The Month



COLLINS LAKE DAY PADDLE

May 23, 2023



More photos on the [Website](#)

FOR SALE

Women's Kayak Boots Size 6
Almost new – Best Offer
2 Kayak Storage Rack
\$75 or best offer
conniejeanwright123@gmail.com



Also can be found on the [Website](#)



ANNOUNCEMENTS

~ TABLE OF OFFSETS ~

STATIONS	0	1	1 1/2	2	2 1/2	3	3 1/2
1" WIDE LINE	1-1/2	1-1/2	1-1/2	1-1/2	1-1/2	1-1/2	1-1/2
1"	1-1/2	1-1/2	1-1/2	1-1/2	1-1/2	1-1/2	1-1/2
2"	1-1/2	1-1/2	1-1/2	1-1/2	1-1/2	1-1/2	1-1/2
3"	1-1/2	1-1/2	1-1/2	1-1/2	1-1/2	1-1/2	1-1/2
4"	1-1/2	1-1/2	1-1/2	1-1/2	1-1/2	1-1/2	1-1/2
5"	1-1/2	1-1/2	1-1/2	1-1/2	1-1/2	1-1/2	1-1/2
6"	1-1/2	1-1/2	1-1/2	1-1/2	1-1/2	1-1/2	1-1/2
7"	1-1/2	1-1/2	1-1/2	1-1/2	1-1/2	1-1/2	1-1/2
8"	1-1/2	1-1/2	1-1/2	1-1/2	1-1/2	1-1/2	1-1/2
9"	1-1/2	1-1/2	1-1/2	1-1/2	1-1/2	1-1/2	1-1/2
10"	1-1/2	1-1/2	1-1/2	1-1/2	1-1/2	1-1/2	1-1/2
11"	1-1/2	1-1/2	1-1/2	1-1/2	1-1/2	1-1/2	1-1/2
12"	1-1/2	1-1/2	1-1/2	1-1/2	1-1/2	1-1/2	1-1/2
13"	1-1/2	1-1/2	1-1/2	1-1/2	1-1/2	1-1/2	1-1/2
14"	1-1/2	1-1/2	1-1/2	1-1/2	1-1/2	1-1/2	1-1/2
15"	1-1/2	1-1/2	1-1/2	1-1/2	1-1/2	1-1/2	1-1/2
16"	1-1/2	1-1/2	1-1/2	1-1/2	1-1/2	1-1/2	1-1/2
17"	1-1/2	1-1/2	1-1/2	1-1/2	1-1/2	1-1/2	1-1/2
18"	1-1/2	1-1/2	1-1/2	1-1/2	1-1/2	1-1/2	1-1/2
19"	1-1/2	1-1/2	1-1/2	1-1/2	1-1/2	1-1/2	1-1/2
20"	1-1/2	1-1/2	1-1/2	1-1/2	1-1/2	1-1/2	1-1/2
21"	1-1/2	1-1/2	1-1/2	1-1/2	1-1/2	1-1/2	1-1/2
22"	1-1/2	1-1/2	1-1/2	1-1/2	1-1/2	1-1/2	1-1/2
23"	1-1/2	1-1/2	1-1/2	1-1/2	1-1/2	1-1/2	1-1/2
24"	1-1/2	1-1/2	1-1/2	1-1/2	1-1/2	1-1/2	1-1/2
25"	1-1/2	1-1/2	1-1/2	1-1/2	1-1/2	1-1/2	1-1/2
26"	1-1/2	1-1/2	1-1/2	1-1/2	1-1/2	1-1/2	1-1/2
27"	1-1/2	1-1/2	1-1/2	1-1/2	1-1/2	1-1/2	1-1/2
28"	1-1/2	1-1/2	1-1/2	1-1/2	1-1/2	1-1/2	1-1/2
29"	1-1/2	1-1/2	1-1/2	1-1/2	1-1/2	1-1/2	1-1/2
30"	1-1/2	1-1/2	1-1/2	1-1/2	1-1/2	1-1/2	1-1/2
31"	1-1/2	1-1/2	1-1/2	1-1/2	1-1/2	1-1/2	1-1/2
32"	1-1/2	1-1/2	1-1/2	1-1/2	1-1/2	1-1/2	1-1/2
33"	1-1/2	1-1/2	1-1/2	1-1/2	1-1/2	1-1/2	1-1/2
34"	1-1/2	1-1/2	1-1/2	1-1/2	1-1/2	1-1/2	1-1/2
35"	1-1/2	1-1/2	1-1/2	1-1/2	1-1/2	1-1/2	1-1/2
36"	1-1/2	1-1/2	1-1/2	1-1/2	1-1/2	1-1/2	1-1/2
37"	1-1/2	1-1/2	1-1/2	1-1/2	1-1/2	1-1/2	1-1/2
38"	1-1/2	1-1/2	1-1/2	1-1/2	1-1/2	1-1/2	1-1/2
39"	1-1/2	1-1/2	1-1/2	1-1/2	1-1/2	1-1/2	1-1/2
40"	1-1/2	1-1/2	1-1/2	1-1/2	1-1/2	1-1/2	1-1/2
41"	1-1/2	1-1/2	1-1/2	1-1/2	1-1/2	1-1/2	1-1/2
42"	1-1/2	1-1/2	1-1/2	1-1/2	1-1/2	1-1/2	1-1/2
43"	1-1/2	1-1/2	1-1/2	1-1/2	1-1/2	1-1/2	1-1/2
44"	1-1/2	1-1/2	1-1/2	1-1/2	1-1/2	1-1/2	1-1/2
45"	1-1/2	1-1/2	1-1/2	1-1/2	1-1/2	1-1/2	1-1/2
46"	1-1/2	1-1/2	1-1/2	1-1/2	1-1/2	1-1/2	1-1/2
47"	1-1/2	1-1/2	1-1/2	1-1/2	1-1/2	1-1/2	1-1/2
48"	1-1/2	1-1/2	1-1/2	1-1/2	1-1/2	1-1/2	1-1/2
49"	1-1/2	1-1/2	1-1/2	1-1/2	1-1/2	1-1/2	1-1/2
50"	1-1/2	1-1/2	1-1/2	1-1/2	1-1/2	1-1/2	1-1/2
51"	1-1/2	1-1/2	1-1/2	1-1/2	1-1/2	1-1/2	1-1/2
52"	1-1/2	1-1/2	1-1/2	1-1/2	1-1/2	1-1/2	1-1/2
53"	1-1/2	1-1/2	1-1/2	1-1/2	1-1/2	1-1/2	1-1/2
54"	1-1/2	1-1/2	1-1/2	1-1/2	1-1/2	1-1/2	1-1/2
55"	1-1/2	1-1/2	1-1/2	1-1/2	1-1/2	1-1/2	1-1/2
56"	1-1/2	1-1/2	1-1/2	1-1/2	1-1/2	1-1/2	1-1/2
57"	1-1/2	1-1/2	1-1/2	1-1/2	1-1/2	1-1/2	1-1/2
58"	1-1/2	1-1/2	1-1/2	1-1/2	1-1/2	1-1/2	1-1/2
59"	1-1/2	1-1/2	1-1/2	1-1/2	1-1/2	1-1/2	1-1/2
60"	1-1/2	1-1/2	1-1/2	1-1/2	1-1/2	1-1/2	1-1/2
61"	1-1/2	1-1/2	1-1/2	1-1/2	1-1/2	1-1/2	1-1/2
62"	1-1/2	1-1/2	1-1/2	1-1/2	1-1/2	1-1/2	1-1/2
63"	1-1/2	1-1/2	1-1/2	1-1/2	1-1/2	1-1/2	1-1/2
64"	1-1/2	1-1/2	1-1/2	1-1/2	1-1/2	1-1/2	1-1/2
65"	1-1/2	1-1/2	1-1/2	1-1/2	1-1/2	1-1/2	1-1/2
66"	1-1/2	1-1/2	1-1/2	1-1/2	1-1/2	1-1/2	1-1/2
67"	1-1/2	1-1/2	1-1/2	1-1/2	1-1/2	1-1/2	1-1/2
68"	1-1/2	1-1/2	1-1/2	1-1/2	1-1/2	1-1/2	1-1/2
69"	1-1/2	1-1/2	1-1/2	1-1/2	1-1/2	1-1/2	1-1/2
70"	1-1/2	1-1/2	1-1/2	1-1/2	1-1/2	1-1/2	1-1/2
71"	1-1/2	1-1/2	1-1/2	1-1/2	1-1/2	1-1/2	1-1/2
72"	1-1/2	1-1/2	1-1/2	1-1/2	1-1/2	1-1/2	1-1/2
73"	1-1/2	1-1/2	1-1/2	1-1/2	1-1/2	1-1/2	1-1/2
74"	1-1/2	1-1/2	1-1/2	1-1/2	1-1/2	1-1/2	1-1/2
75"	1-1/2	1-1/2	1-1/2	1-1/2	1-1/2	1-1/2	1-1/2
76"	1-1/2	1-1/2	1-1/2	1-1/2	1-1/2	1-1/2	1-1/2
77"	1-1/2	1-1/2	1-1/2	1-1/2	1-1/2	1-1/2	1-1/2
78"	1-1/2	1-1/2	1-1/2	1-1/2	1-1/2	1-1/2	1-1/2
79"	1-1/2	1-1/2	1-1/2	1-1/2	1-1/2	1-1/2	1-1/2
80"	1-1/2	1-1/2	1-1/2	1-1/2	1-1/2	1-1/2	1-1/2
81"	1-1/2	1-1/2	1-1/2	1-1/2	1-1/2	1-1/2	1-1/2
82"	1-1/2	1-1/2	1-1/2	1-1/2	1-1/2	1-1/2	1-1/2
83"	1-1/2	1-1/2	1-1/2	1-1/2	1-1/2	1-1/2	1-1/2
84"	1-1/2	1-1/2	1-1/2	1-1/2	1-1/2	1-1/2	1-1/2
85"	1-1/2	1-1/2	1-1/2	1-1/2	1-1/2	1-1/2	1-1/2
86"	1-1/2	1-1/2	1-1/2	1-1/2	1-1/2	1-1/2	1-1/2
87"	1-1/2	1-1/2	1-1/2	1-1/2	1-1/2	1-1/2	1-1/2
88"	1-1/2	1-1/2	1-1/2	1-1/2	1-1/2	1-1/2	1-1/2
89"	1-1/2	1-1/2	1-1/2	1-1/2	1-1/2	1-1/2	1-1/2
90"	1-1/2	1-1/2	1-1/2	1-1/2	1-1/2	1-1/2	1-1/2
91"	1-1/2	1-1/2	1-1/2	1-1/2	1-1/2	1-1/2	1-1/2
92"	1-1/2	1-1/2	1-1/2	1-1/2	1-1/2	1-1/2	1-1/2
93"	1-1/2	1-1/2	1-1/2	1-1/2	1-1/2	1-1/2	1-1/2
94"	1-1/2	1-1/2	1-1/2	1-1/2	1-1/2	1-1/2	1-1/2
95"	1-1/2	1-1/2	1-1/2	1-1/2	1-1/2	1-1/2	1-1/2
96"	1-1/2	1-1/2	1-1/2	1-1/2	1-1/2	1-1/2	1-1/2
97"	1-1/2	1-1/2	1-1/2	1-1/2	1-1/2	1-1/2	1-1/2
98"	1-1/2	1-1/2	1-1/2	1-1/2	1-1/2	1-1/2	1-1/2
99"	1-1/2	1-1/2	1-1/2	1-1/2	1-1/2	1-1/2	1-1/2
100"	1-1/2	1-1/2	1-1/2	1-1/2	1-1/2	1-1/2	1-1/2

Table of offsets available upon purchase of plans

17' WOOD AND CANVAS CANOE
BUILT BY THE KENNEBEC BOAT & CANOE Co.

LENGTH OVER ALL — 17' 1 3/4"
LENGTH BETWEEN STEM TOPS — 15' 9"
DECK — OVER GUNWALES — 5 1/8"
DEPTH BOWSHIP — INSIDE — 13 1/2"
WEIGHT DRY — POUNDS — 102

CONDITION — Good
SERIAL NUMBER — 14380
OWNER — RICHARD MOLETTE
MEASURED BY J. RITTER & R. CROSSIN 6-81
DRAWN BY J. RITTER 9-81

GENERAL NOTES: Overall the canoe was in good shape, and was used every summer, but some varnish was peeling and the canvas was torn in several places. All wooden parts were in good condition and there were no obvious ribs. The interior, gunwales, deck, seats, and keel were varnished. The canvas was painted a reddish egg blue. The offsets are to the inside of the planking and are in feet-inches-digits. A 1/4" offset means a quarter of an inch. Stem offsets are in the outside of the hull. Gunwales are given half to help find out the lifting and are not shown in this plan. All views are only representative and not actual.

RECOMMENDED: REPAIRING & BUILDING THE KENNEBEC CANOE, BY JERRY STEPHENSON

COVER BOARDS — Spruce 1/2" x 1 1/2" x 30" shaped as in the plan view, attached with small nails. The only function of the cover boards is to finish off the joint between the deck, hull, ribs and the gunwale.

STEM BAND — Brass 1/2" half inch, driven 3/4" into hull, spaced about every 6".

STEMS — Ash 3/4" x 1 1/2", stem bent and beveled for the planking. Approx 45° lands with notches for the ribs. Ribs nailed to stem from the outside. Planking is a to the stem. Same for the stern.

DECKS — Spruce, approx 1 1/2" x 7" one solid piece. Classic heart shape glued to the curve of the hull and 30" thick. All canvas patch is 2" deep and the ribs are painted in the underlaid. Sealed on from the outside. Builders plate on the stem.

BOW SEAT — Seat dimensions: 10" x 14" outside measure. Rail widths 2" and 2 1/2" one piece. Bow seat cushion 10" x 14" painted under. Inside front edge of seat is 4" from centerline. See stern seat for additional information.

STERN SEAT — White oak, caulked stick dimensions: 1 1/2" x 5". Seat dimensions: 10" x 14" outside measure. Rail widths 1 1/2" and 1 3/4" canvas poles spaced 70". On center medium or canvas canvas. Regular's strand pattern. Front edge of rail is 3/4" from center line. 3/4" under stem rail only.

THwarts, Fore & Aft — White oak 2 1/2" x 2 1/2" with 15" wide centerline of foremast. Thwart is 30 1/2" from aft. Centerline of aft thwart is 31 1/2" from mast centerline. Mounted under hull with our brass but in each case.

OUTWALE — General dimensions are 1 1/2" x 1" offset. Then beveled for the gunwale and secured to each plank and canvas knees. Screwed on from the outside. Through every other rib.

INWALE — Spruce 1/2" x 3/4" then beveled for the gunwale. (Planking then goes over gunwale).

RIBS — White cedar 1/2" x 2 1/2" approx tapered to 1 1/2" over a distance of 20". 45 ribs one piece. Gunwale to gunwale. 6 false or split ribs, 3 in each end. The longest rib is approx 33" 1/2" from between ribs. 5 every other rib is removed to the keel. Rib tops joined to inwale.

PLANKING — White cedar 1/2" thick, 7 planks, 3 1/2" wide. Ends up 1/4" and the gunwale. Use of staples to cover the rail all strokes. Canvas nailed from the outside.

SIDE KEEL — Oak 1 1/2" x 3/4" approx 14 1/2" long. Feather taper starts 2" from each end. Sealed on from the inside through every other rib.

CANVAS — Probably a number 3 canvas. Painted at stem and stern. Filled and painted. Canvas is one piece.

Base Line Scale 1/2" = 1'

Page 9

WEBSITE

NEWS

**HERE ARE THE MOST
RECENT UPDATES TO
MYSNCKC.ORG:
FROM GWENN**

◆ Trips

[Trips | Sierra Nevada Canoe and Kayak Club \(wordpress.com\)](#)

◆ Next Club Meeting

[Meetings & Events | Sierra Nevada Canoe and Kayak Club \(wordpress.com\)](#)

◆ Boots, Kayak Rack and Kayak for Sale in Classified

[Classifieds | Sierra Nevada Canoe and Kayak Club \(wordpress.com\)](#)

◆ Picnic Photos

[2023-05-25 Club Picnic 20th Anniversary | Sierra Nevada Canoe and Kayak Club \(wordpress.com\)](#)

◆ Collins Lake Photos

[2023-05-23 Collins Lake | Sierra Nevada Canoe and Kayak Club \(wordpress.com\)](#)

◆ Scott's Flat Photos

[2023-05-07 Scotts Flat Lake | Sierra Nevada Canoe and Kayak Club \(wordpress.com\)](#)

THE NEWSLETTER GETS A NAME

There were 4 entries to name the newsletter:

1. The Monthly Portage - Keith Schoendoerfer
2. The Riffles - Linda Lansky
3. The Lunch Stop - Anonymous
4. The Wet Exit - Joe Abrell

I thought that I would poll the BOD and see if there was a favorite before deciding on going to the general membership for a vote. The clear favorite by a 2 to 1 margin was “The Wet Exit” submitted by Joe Abrell. Thanks Joe for offering up such an amusing name.



Cheers,
Keith

WHERE'S THE KAYAK



Wendy Thibeault correctly identified the location of the May kayak (Left) as being at Lake Valley Reservoir. The photo below is also from the trip photo archives. What venue is it and in what year was it taken?

Send your answers to keith@zwrvr.net



Current SNCKC Officers



- | | | | |
|---------------------|-------------------|-----------------------------|---------------------|
| • President: | Chris Crain | • Treasurer: | Colleen Wirth |
| • Trips/VP: | Rachel Finson | • Membership: | Susan Rossman |
| • Programs: | Debi Savoy | • Communications: | Gwen Huff |
| • Secretary: | Marna Duncan | • Newsletter: | Keith Schoendoerfer |
| • At Large: | Marlee Chamberlin | • Honorary (Founder) | Kit Wiegman |

FIND OUR WEBSITE AT

mysnckc.org